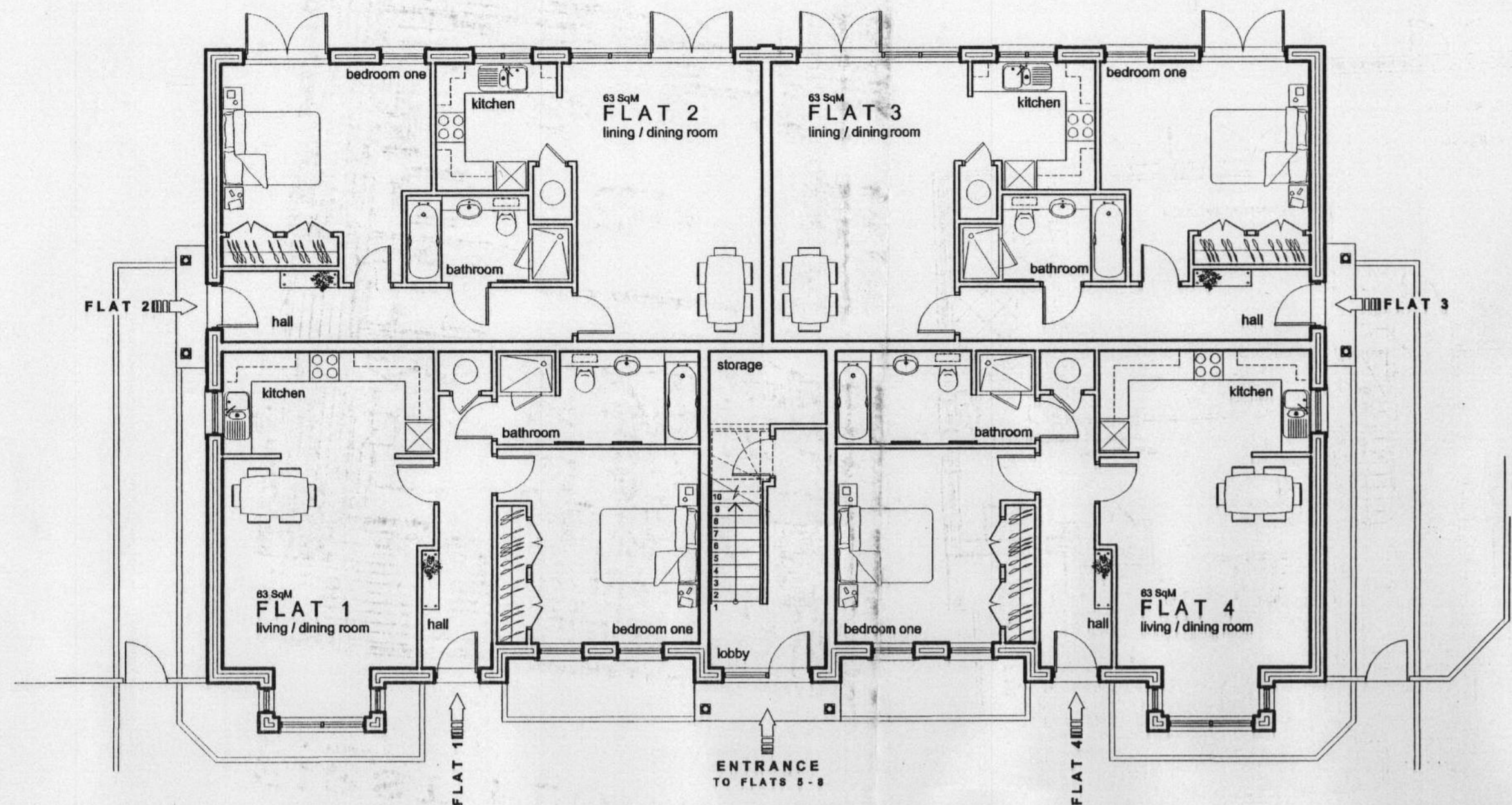
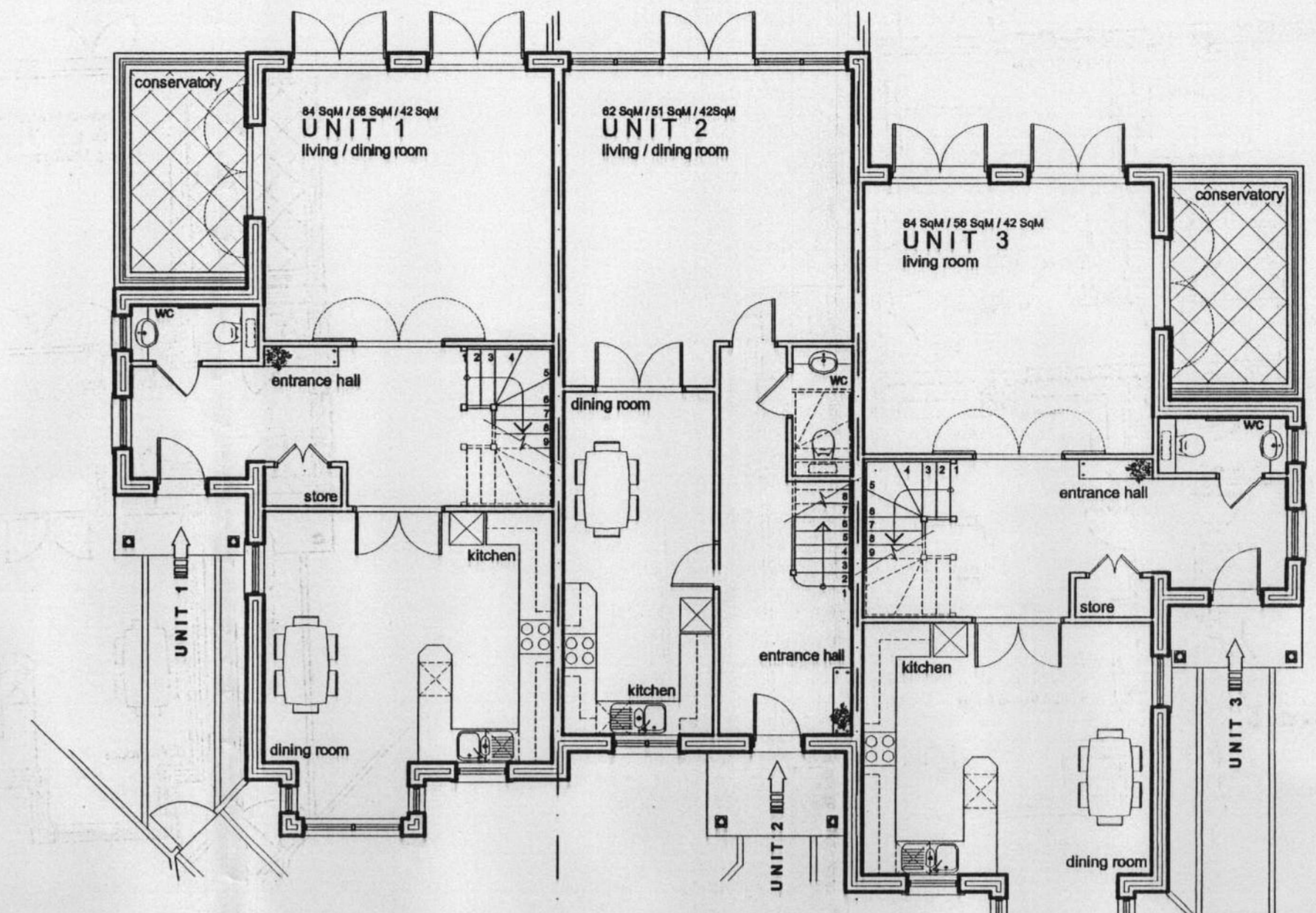


03/1979/FUL  
Do not scale from this drawing



**BLOCK TWO GROUND FLOOR PLAN**  
SCALE 1:100



**BLOCK THREE GROUND FLOOR PLAN**  
SCALE 1:100

**SCHEDULE OF ACCOMMODATION**

**BLOCK TWO**

Ground Floor :

Flat 1 - 63 SqM 1 Bed  
Flat 2 - 63 SqM 1 Bed  
Flat 3 - 63 SqM 1 Bed  
Flat 4 - 63 SqM 1 Bed

First Floor :

Flat 5 - 105 SqM 2 Bed  
Flat 6 - 105 SqM 2 Bed

Second Floor :

Flat 7 - 83 SqM 2 Bed  
Flat 8 - 83 SqM 2 Bed

**BLOCK THREE**

Unit one :

Ground Floor - 84 SqM  
First Floor - 56 SqM  
Second Floor - 42 SqM  
182 SqM 4 Bed

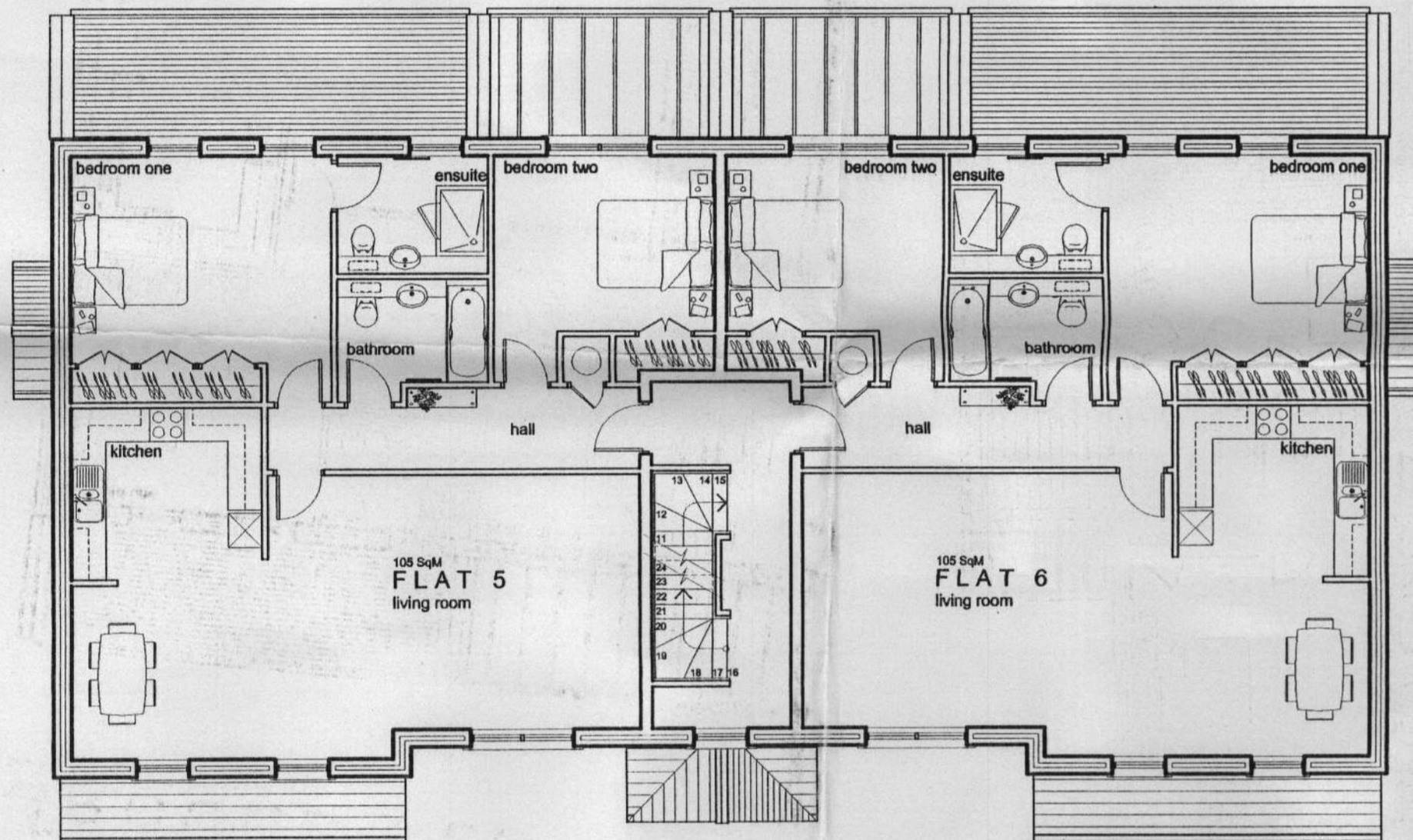
Unit two :

Ground Floor - 62 SqM  
First Floor - 51 SqM  
Second Floor - 42 SqM  
155 SqM 4 Bed

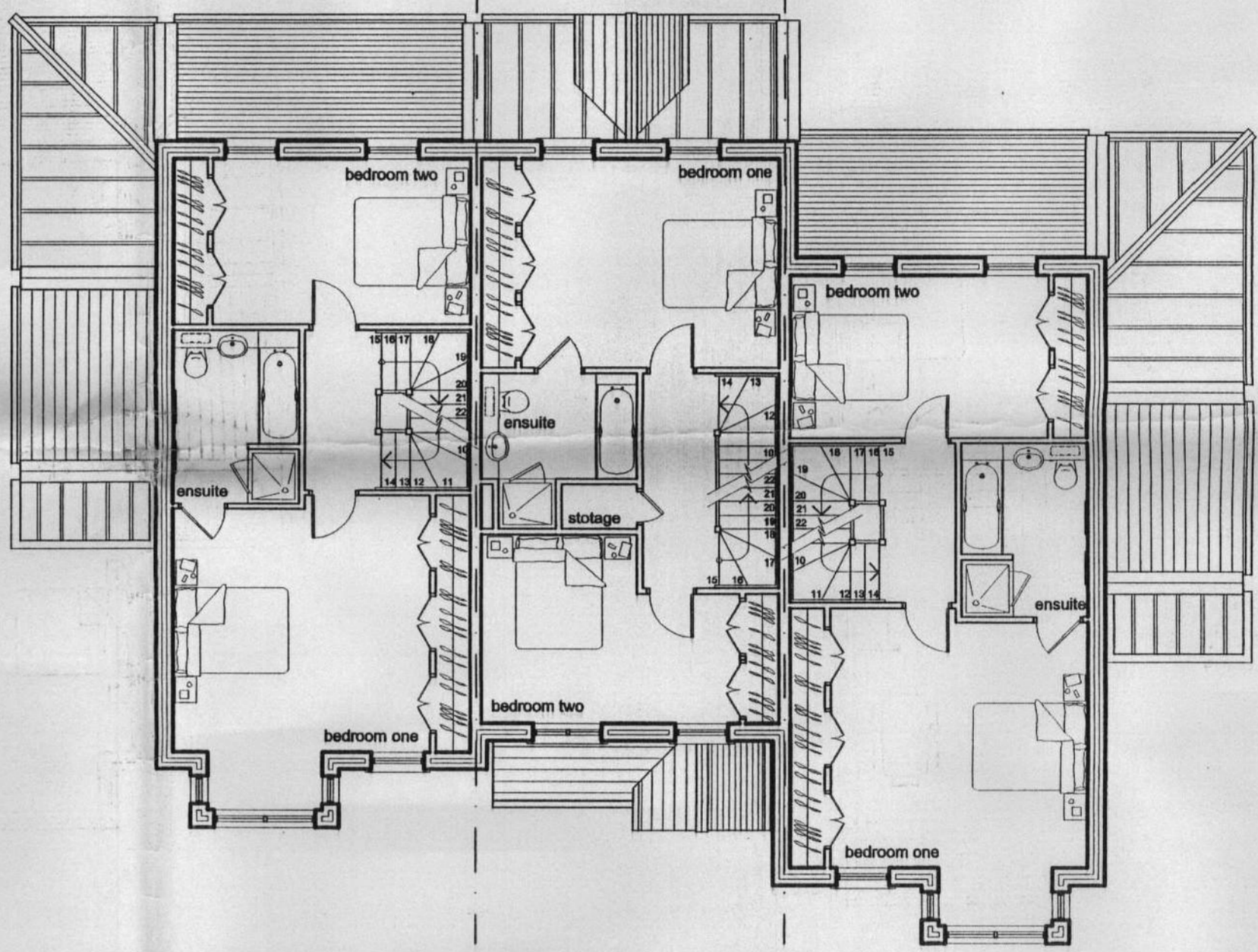
Unit three :

Ground Floor - 84 SqM  
First Floor - 56 SqM  
Second Floor - 42 SqM  
182 SqM 4 Bed

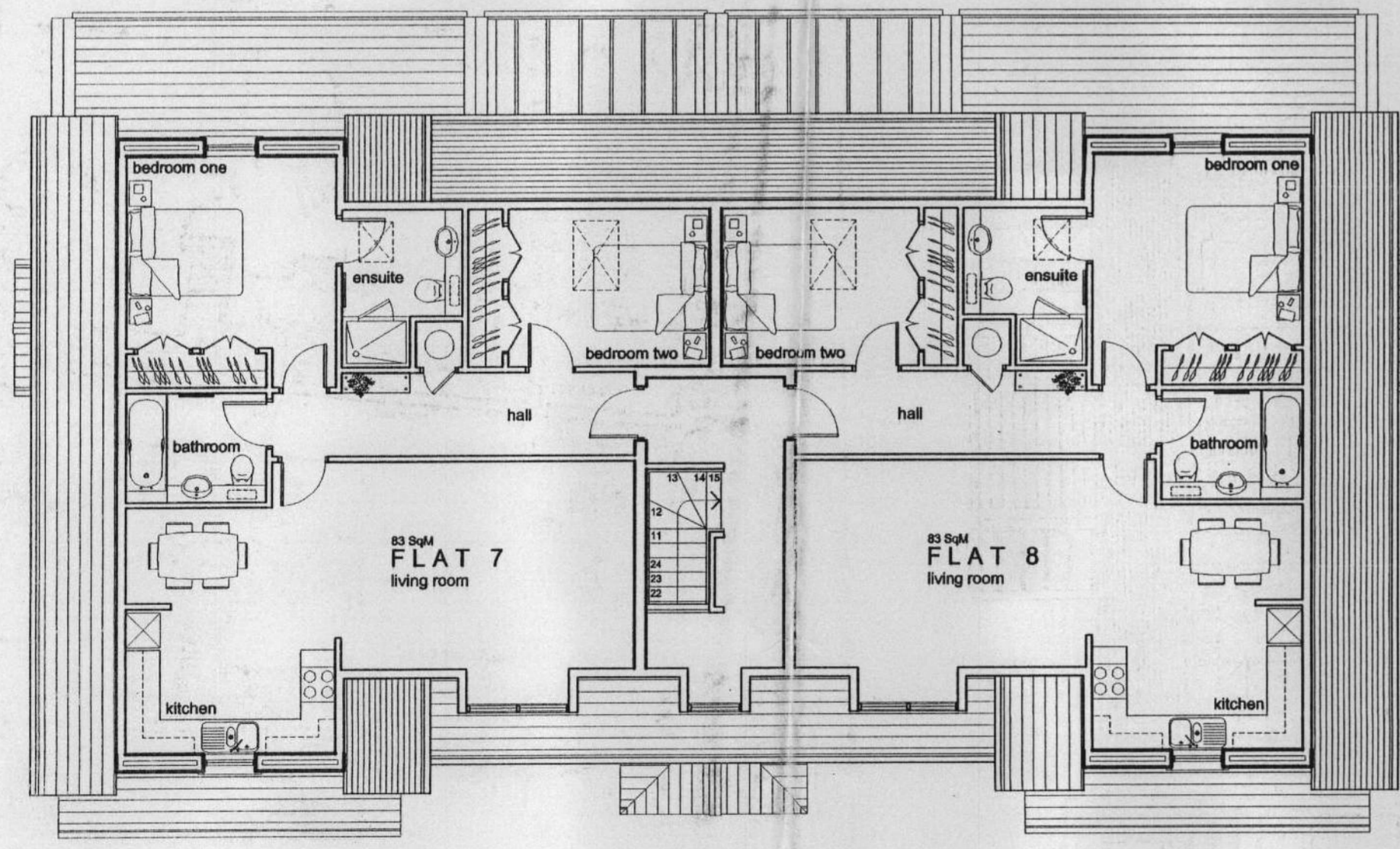
ALL AREAS ARE APPROXIMATE



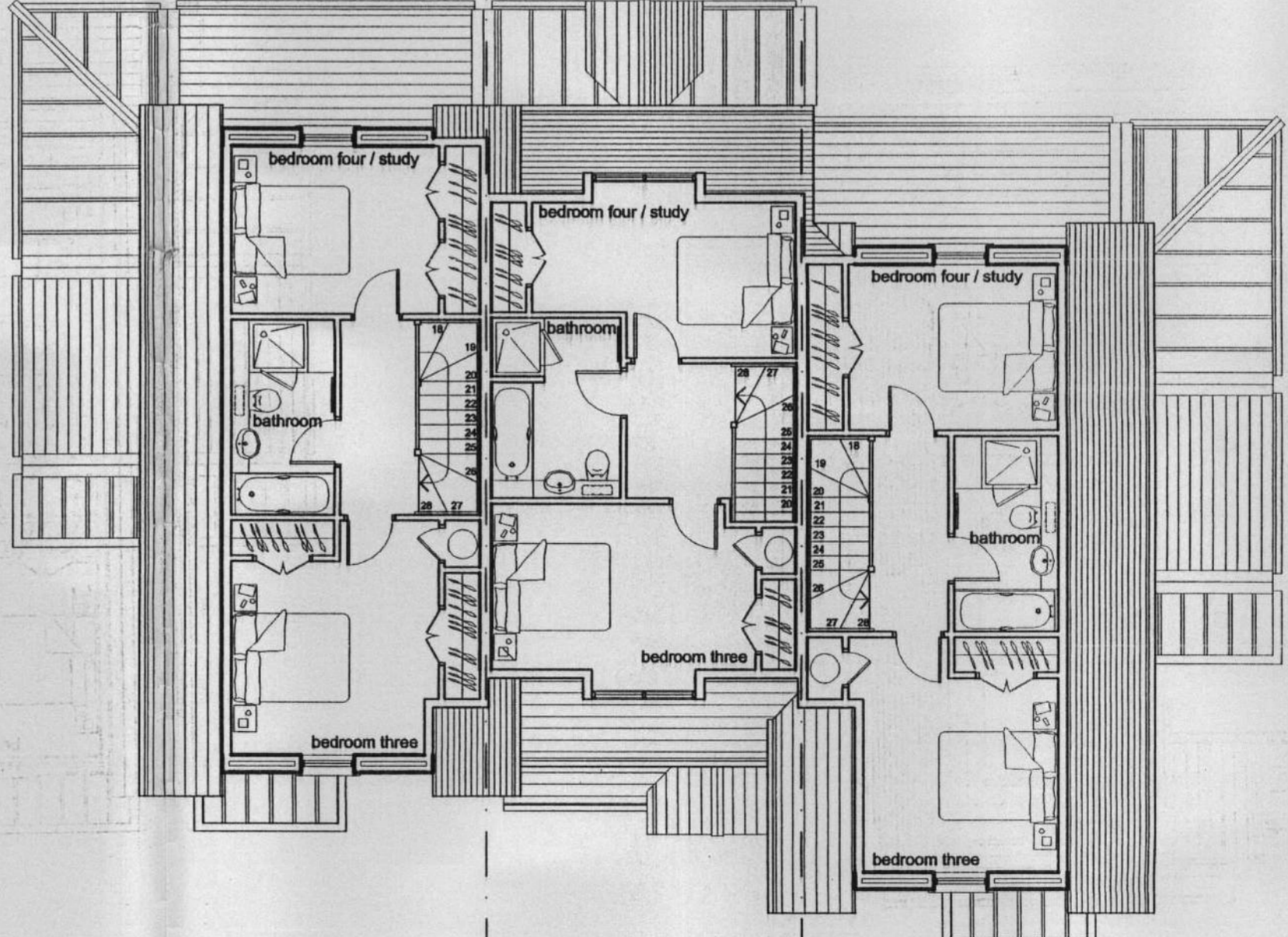
**FIRST FLOOR PLAN**  
SCALE 1:100



**FIRST FLOOR PLAN**  
SCALE 1:100



**SECOND FLOOR PLAN**  
SCALE 1:100



**SECOND FLOOR PLAN**  
SCALE 1:100

Author	
Check	
30 JUL 2003	Copies to:

Revision	Description	Date
C	Footprint and internal layouts of Block 3 amended.	July '03
B	Dormers replaced with velux's to rear of second floor of block two.	June '03
A	Internal layouts to Blocks 2 & 3 amended.	April '03

Client  
**Laing Homes Thames Valley**

Project  
**10 Glamorgan Road  
Hampton Wick  
Surrey**

Drawing  
**Proposed Floor Plans  
Block 2 and 3  
Amended 03/1979/FUL**

Scale  
1:100

Date  
March '03

Drawn  
jje

**PAUL BROOKES ARCHITECTS**  
The Works 28 Barnes Avenue London SW13 9AB  
Telephone 020 8563 0181  
Facsimile 020 8563 0763  
E Mail pb@pbaworks.co.uk

Drawing No  
**2430 | D [ ] 502<sup>C</sup>**